



CHAMELEON STONE

from Nature, better than Nature

ARTIFICIAL MARBLE

Shenzhen Chameleon Stone Industry Co., Ltd.

0 silica





Artificial Marble

CONTENTS

BIG SLAB SERIES:3200*1600

| | |
|---------------------------|----|
| COMPANY PROFILE | 04 |
| PRODUCTION PROFILE | 05 |
| APPLICATIONES | 06 |
| CALACATTA SERISE | 07 |
| CALACATTA WHITE 1 | 08 |
| CALACATTA WHITE 32 | 09 |
| CALACATTAWHITE 8 | 10 |
| EAST WHITE | 11 |
| CALACATTA WHITE 90 | 12 |
| CALACATTA COLOR SAMPLE-1 | 13 |
| CALACATTA COLOR SAMPLE-2 | 14 |
| FINE GRAIN PLATE | 15 |
| THE BLACK ROSE | 16 |
| ARISTON | 17 |
| YUNDORA GREY | 18 |
| CLOUDY GREY | 19 |
| DISTANT MOUNTAIN WHITE | 20 |
| FINE GRAIN PLATE SAMPLE-1 | 21 |
| FINE GRAIN PLATE SAMPLE-2 | 22 |



CONTENTS

FULL BODY SLAB SERIES:2700*1800

| | |
|---------------------------------|----|
| SUPER FINE GRAIN PLATE | 23 |
| CALACATTA GOLD | 24 |
| ROCK GREY | 25 |
| WIESS GREY | 26 |
| PANDA WHITE | 27 |
| DARK NIGHT | 28 |
| SUPER FINE GRAIN PLATE SAMPLE-1 | 29 |
| SUPER FINE GRAIN PLATE SAMPLE-2 | 30 |
| SUPER FINE GRAIN PLATE SAMPLE-3 | 31 |

| | |
|----------------------|----|
| GRAIN PLATE | 32 |
| SKY BLACK | 33 |
| PURE WHITE | 34 |
| CRYSTAL WHITE | 35 |
| SUPER WHITE | 36 |
| HIGHCLASS GREY | 37 |
| GRAIN PLATE SAMPLE-1 | 38 |
| GRAIN PLATE SAMPLE-2 | 39 |
| CONTACT US | 40 |



COMPANY PROFILE

Shenzhen Chameleon Stone Industry Co., Ltd. is a manufacturer and exporter specializing in the design, development and production of various stone products. We are located in convenient transportation Shenzhen, the factory is located in the marble capital - Guangxi Hezhou. All of our products meet international quality standards and are highly rated in different markets around the world. Our annual sales are over \$6 million and currently 90% of our products are exported worldwide. Our highly trained sales team and excellent quality control at all production stages enable us to guarantee complete customer satisfaction.

Chameleon Stone brand has been committed to explore the perfect integration between science and technology and natural art, implement the product idea of "From nature, better than nature". It aims to provide high-end brand products and service support for people who pursue higher quality life.



OUR ADVANTAGES

TERRITORIAL ADVANTAGE:

Our company is located in the 100 billion Calcium Carbonate producing base in China

TECHNOLOGY ADVANTAGES:

1. Possessed core patented technology for almost 20 items of national patents for invention and more than 10 items of national patents for utility model.
2. Cooperating with the China Academy of Sciences, we tackled the key technical problem for artificial marble with microwave solidification technology.

MANAGEMENT SYSTEM AND HONORARY TITLE:

- 1) "the certification of ISO9001 international quality management system" "the certification of ISO14001 environmental management system"
- 2) "China man-made stone national standard drafting unit"
- 3) "the certification of China environmental Labeling product"
- 4) "Green Factory"
- 5) "Export brand-name the province focused on cultivating and developing"

With high esteem from customers in the USA, UK, Germany, and various other countries, our products have been successfully sold in over 40 countries worldwide. In the domestic market, we have established strategic partnerships with large real estate enterprises such as Evergrande Real Estate, MiddleSea Real Estate, Vanke Real Estate, etc.



Production Profile

| | | | | | | |
|--------------------|---|----------------------|-------------------|-------------------------------|---------------------|---------|
| Item Name | Chameleon Artificial Marble | | | | | |
| Technicai Data | Glossiness | 85° | Density | 2.55 g/cm³ | Mohs Hardness | 3-4 Msh |
| | Compressive strength | 110 Mpa | Impact resistance | the sample is not damaged | Water Absorption | 0.02% |
| | Flexural strength | 35.6Mpa | Radiocativity | Ir<0.1 Ira<0.1 Class: A | Abrasion resistance | 302mm³ |
| | Coefficient of thermal expansion | 2.2x10 ⁻⁵ | Angle (L≤400) | 0.05 | Flatness (L≤400) | 0.03 |
| Appearance quality | Stomatal | 0 | Aberration | N/A | impurity | N/A |
| Material | Marble powder, resin | | | | | |
| Applications | floor, interior wall, vanity top, fireplace, window sills table tops | | | | | |
| Functions | Chip,crack & scratch resistant, enviromentally friendly materials, non-abberation, high rupture, low water absorption, no radiation | | | | | |
| Size | 3200x1600mm, 2700x1800mm, 2400x1600mm; cut-to-size is available | | | | | |
| Thickness | 8mm , 12mm, 14mm, 15mm, 16mm 18mm, 20mm, 25mm, 30mm. Customized is acceptale. | | | | | |
| Package | a) Slabs: 12-18pcs pack in a seaworthy bundle(after fumigation) . b) Cut-to-size:60-80pcs pack in a seaworthy crates. c) Countertop, Vanity top:12-25pcs pack in a seaworthy crates,each surface cover with PE film. d) Stair Step:80-120pcs pack in a seaworthy crates, each 10-15pcs a bundle. | | | | | |
| HS code | 6810191000 | | | | | |
| Colour Patterns | white, grey, beige, black | | | | | |
| Certificates | ISO9001, ISO14001, ISO18001 | | | | | |

PACKAGING



COMPANY: Shenzhen Chameleon Stone Industry Co., Ltd.
P H O N E : +86 17840845679 +86 19849740604
WEBSITE: <https://chameleons.en.alibaba.com> E-Mail:stella@chameleonstone.cn
ADDRESS: 3010 Banxuegang Avenue, Bantian Street,Longgang District, 518129,Shenzhen, China

VANITY TOP

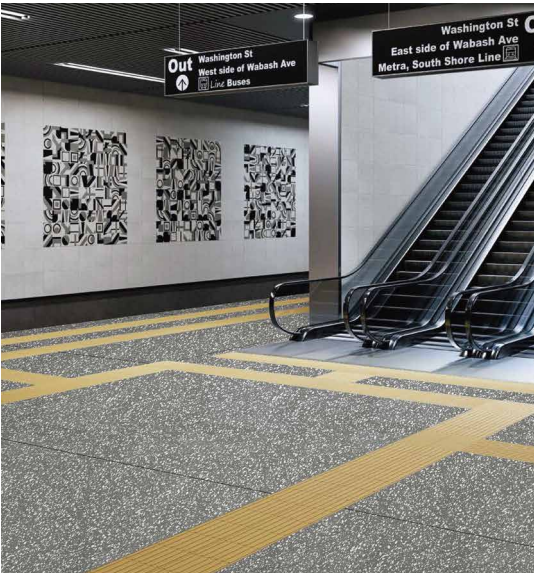
COUNTERTOP

WINDOW SILL

SHOWER PANEL

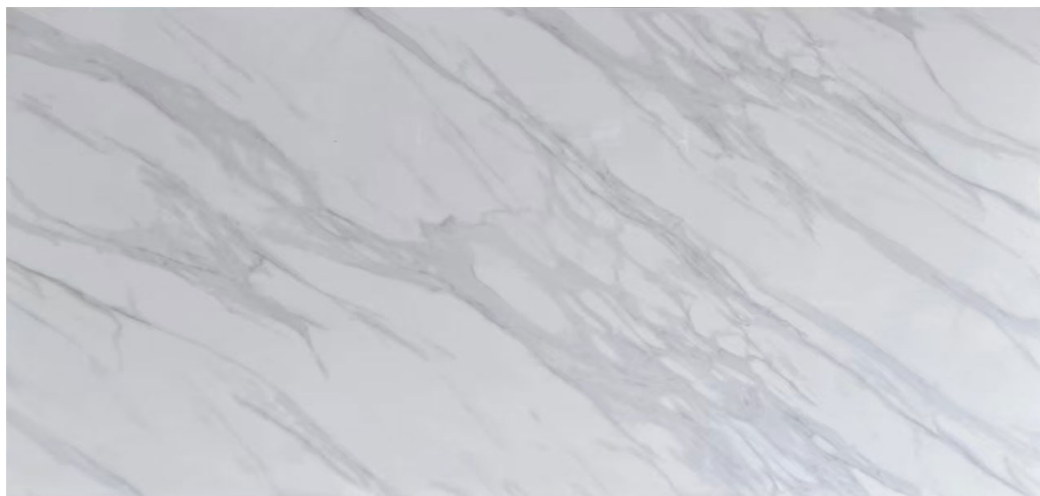
FLOORING

THRESHOLD



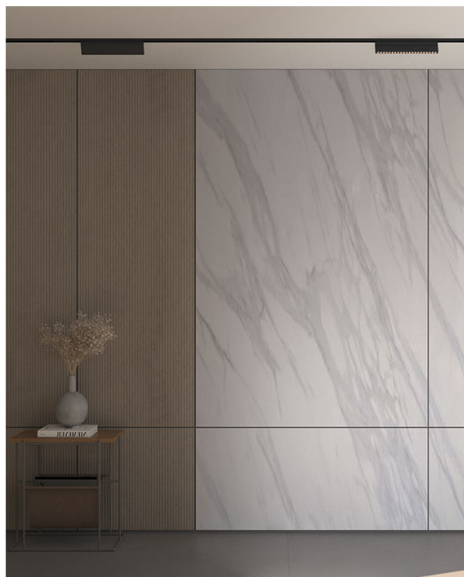
CALACATTA SERISE

CALACATTA WHITE 1



BSL-AM010 SIZE:2700X1800mm 3200X1600mm THICKNESS:14-30mm CUT-TO-SIZE AVAILABLE

Fashion simple, stain resistant, impermeable, scratch-resistant.



CALACATTA WHITE 32



BSL-AM011

SIZE:2700X1800mm 3200X1600mm

THICKNESS:14-30mm

CUT-TO-SIZE AVAILABLE

Fashion simple, stain resistant, impermeable, scratch-resistant.



CALACATTA WHITE 8



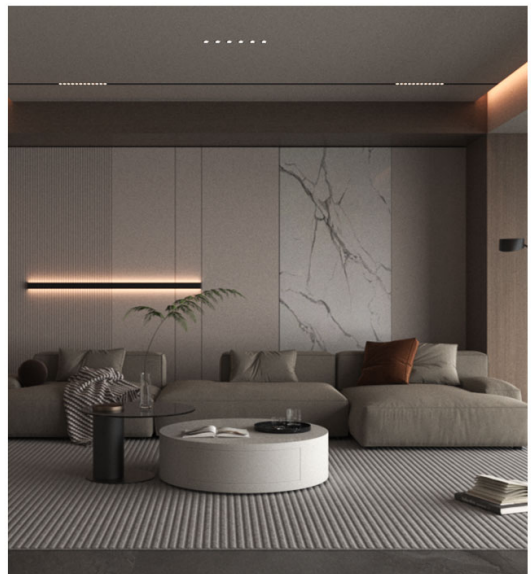
BSL-AM012

SIZE:2700X1800mm 3200X1600mm

THICKNESS:14-30mm

CUT-TO-SIZE AVAILABLE

It has noble and elegant characteristics, but also has beautiful color and uniform color



EAST WHITE

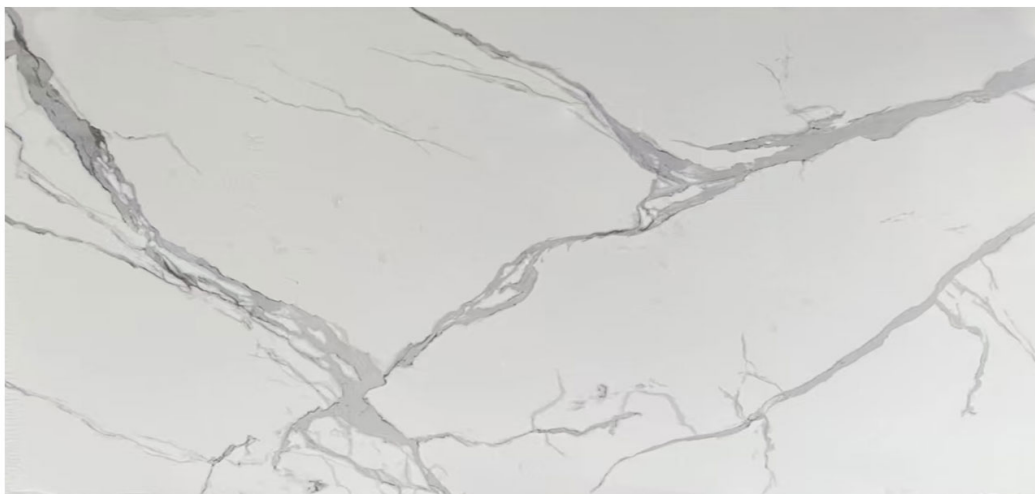


BSL-AM013 SIZE:2700X1800mm 3200X1600mm THICKNESS:14-30mm CUT-TO-SIZE AVAILABLE

It has noble and elegant characteristics, but also has beautiful color and uniform color.



CALACATTA WHITE 90



BSL-AM014

SIZE:2700X1800mm 3200X1600mm

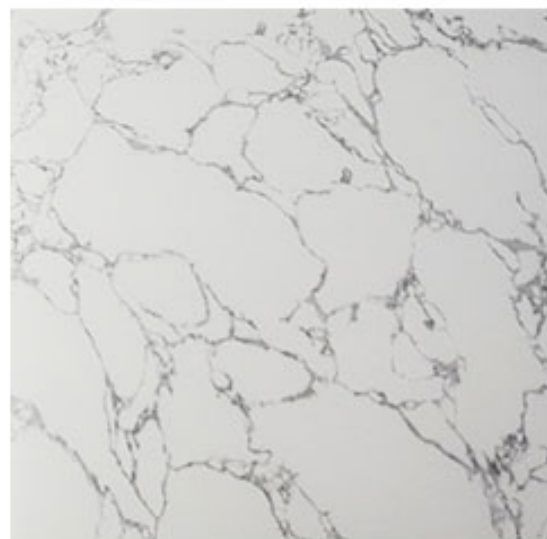
THICKNESS:14-30mm

CUT-TO-SIZE AVAILABLE

Natural color, uniform color, high finish, resistance to pressure and wear, good permeability



Calacatta series



BSL-AM030



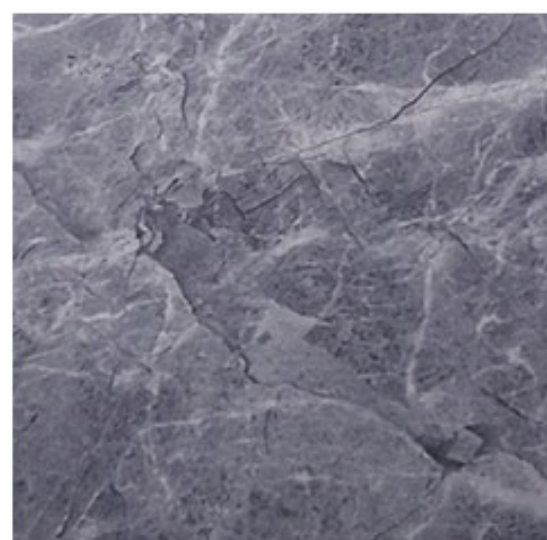
BSL-AM031



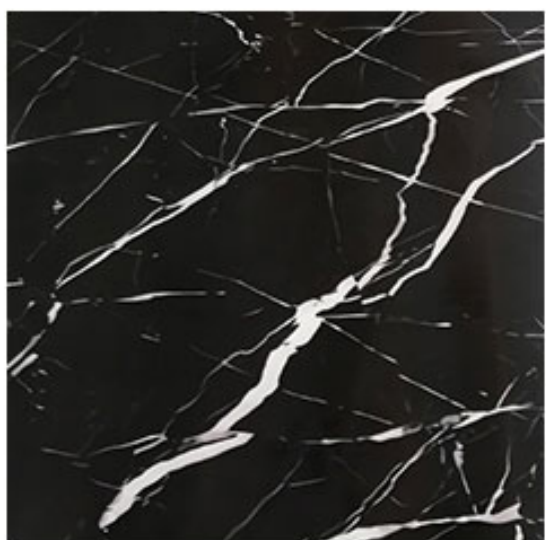
BSL-AM032



BSL-AM033



BSL-AM034



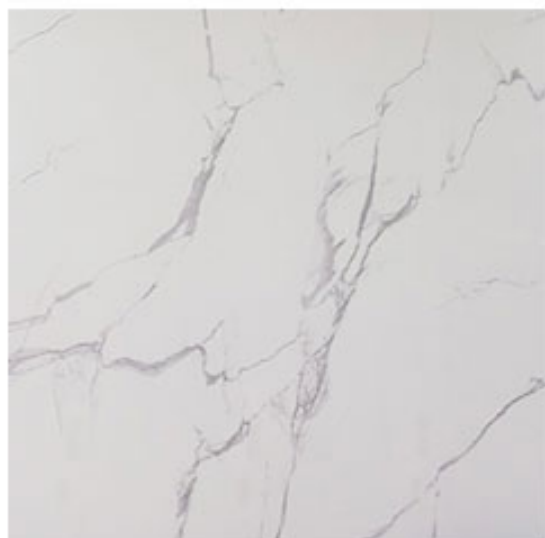
BSL-AM035



BSL-AM036



BSL-AM037



BSL-AM038



BSL-AM039



BSL-AM040



BSL-AM041

FINE GRAIN PLATE

THE BLACK ROSE



BSL-AM015 SIZE:2700X1800mm 3200X1600mm THICKNESS:14-30mm CUT-TO-SIZE AVAILABLE

High-end, magnificent, bright, stylish



ARISTON



BSL-AM016

SIZE:2700X1800mm 3200X1600mm

THICKNESS:14-30mm

CUT-TO-SIZE AVAILABLE

Stylish and simple, cheerful atmosphere.



YUNDORA GREY



BSL-AM017 SIZE:2700X1800mm 3200X1600mm THICKNESS:14-30mm CUT-TO-SIZE AVAILABLE

Stylish and simple, cheerful atmosphere.



CLOUDY GREY



BSL-AM018 SIZE:2700X1800mm 3200X1600mm THICKNESS:14-30mm CUT-TO-SIZE AVAILABLE

The color is uniform, like clouds and mist



DISTANT MOUNTAIN WHITE



BSL-AM019

SIZE:2700X1800mm 3200X1600mm

THICKNESS:14-30mm

CUT-TO-SIZE AVAILABLE

The colors are like clouds in the mountains



Fine grain plate



BSL-AM042



BSL-AM043



BSL-AM044



BSL-AM045



BSL-AM046



BSL-AM047

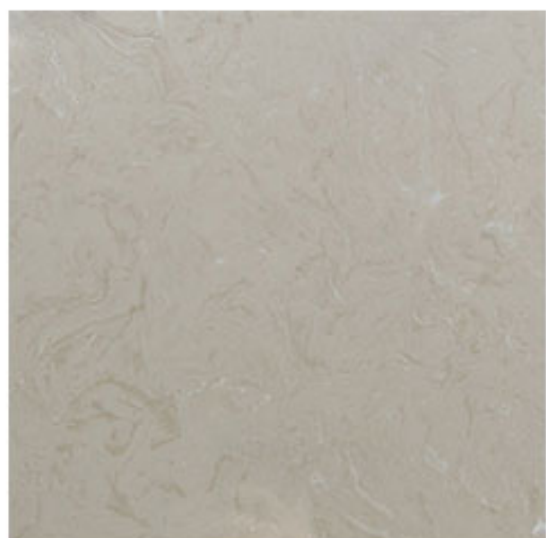
Fine grain plate



BSL-AM048



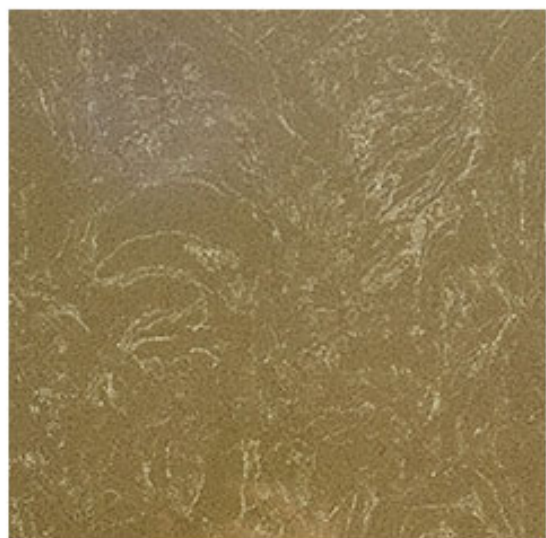
BSL-AM049



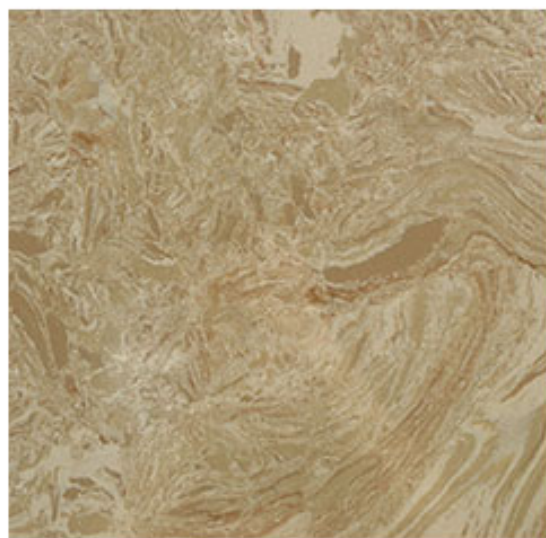
BSL-AM050



BSL-AM051



BSL-AM052



BSL-AM053

**SUPER
FINE GRAIN PLATE**

CALACATTA GOLD



BSL-AM001S SIZE:2700X1800mm THICKNESS:14-30mm CUT-TO-SIZE AVAILABLE

Gorgeous and exquisite texture, fine and smooth



ROCK GREY



BSL-AM002S

SIZE:2700X1800mm

THICKNESS:14-30mm

CUT-TO-SIZE AVAILABLE

Uniform color, thick and steady.



WIESS GREY

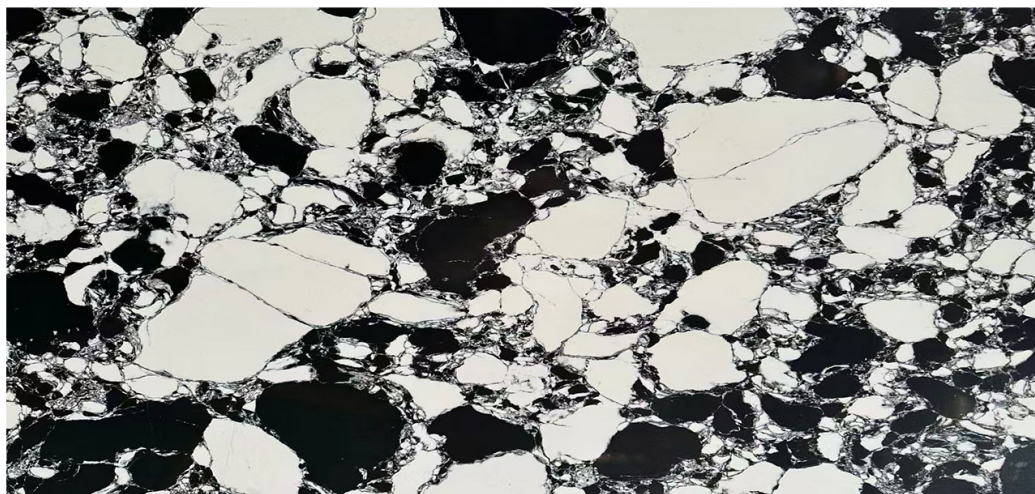


BSL-AM003S SIZE:2700X1800mm THICKNESS:14-30mm CUT-TO-SIZE AVAILABLE

Elegant color, stable quality, with light weight advantages.



PANDA WHITE



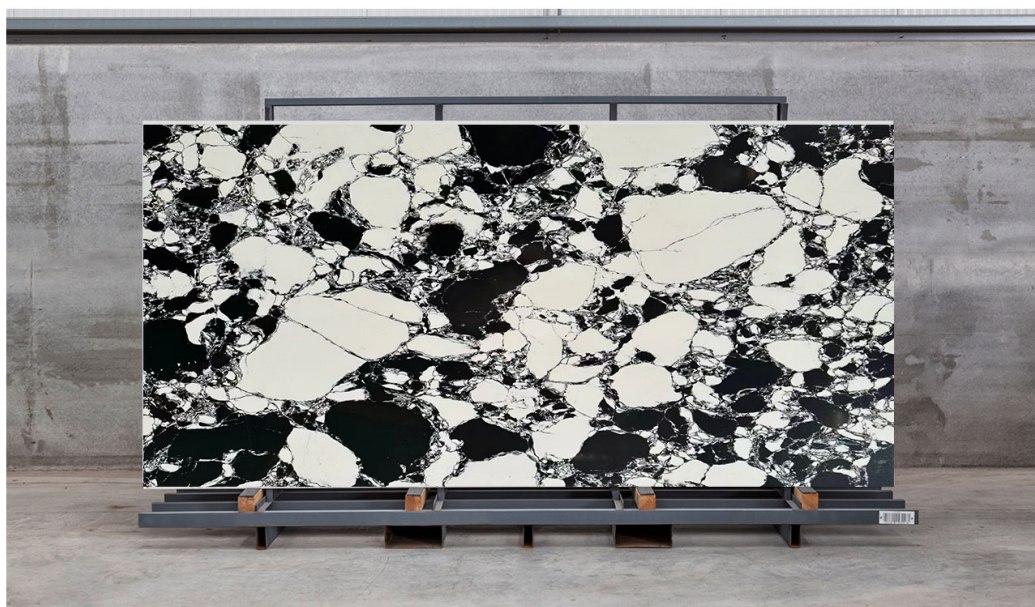
BSL-AM004S

SIZE:2700X1800mm

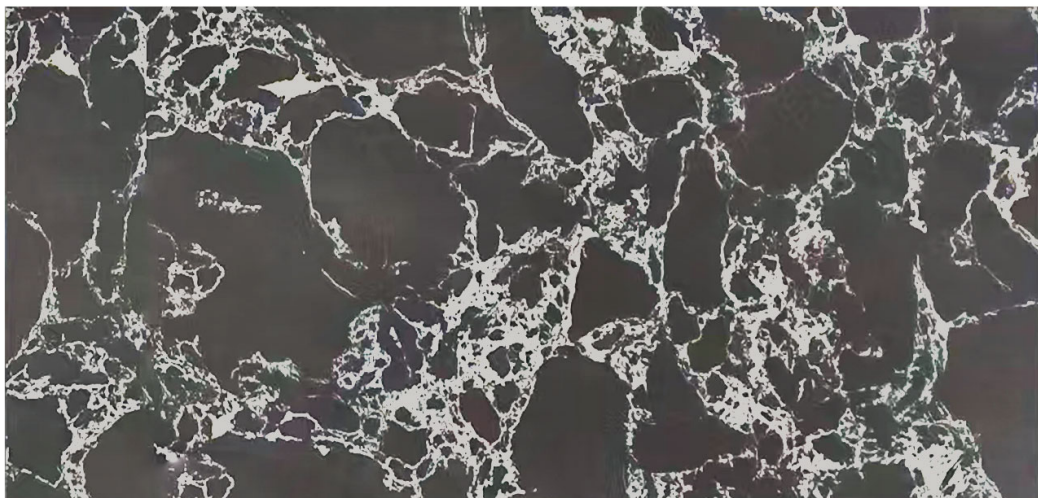
THICKNESS:14-30mm

CUT-TO-SIZE AVAILABLE

The black and white color scheme is stylish and vibrant



DARK NIGHT



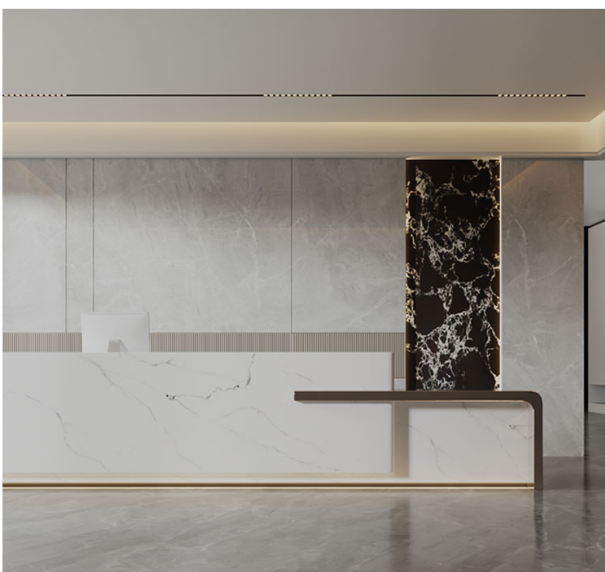
BSL-AM005S

SIZE:2700X1800mm

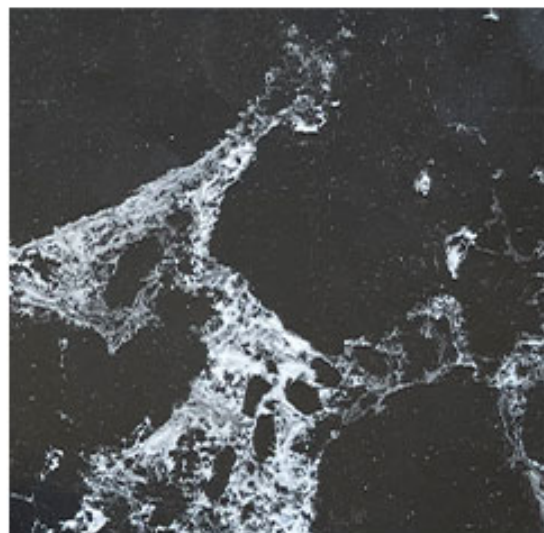
THICKNESS:14-30mm

CUT-TO-SIZE AVAILABLE

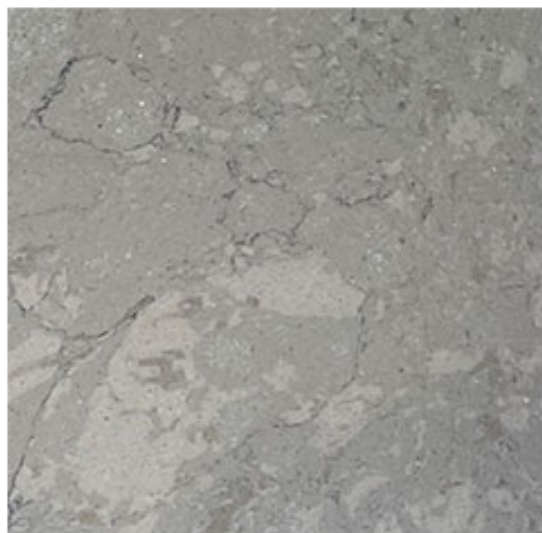
Beautiful and gorgeous colors, like the night sky.



SUPER FINE GRAIN PLATE



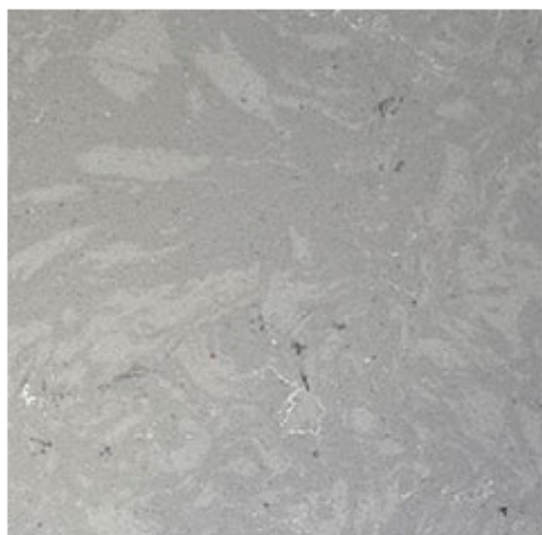
BSL-AM010S



BSL-AM011S



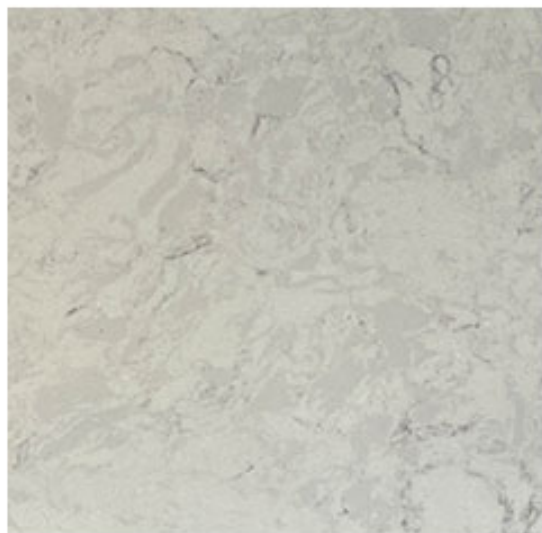
BSL-AM012S



BSL-AM013S



BSL-AM014S

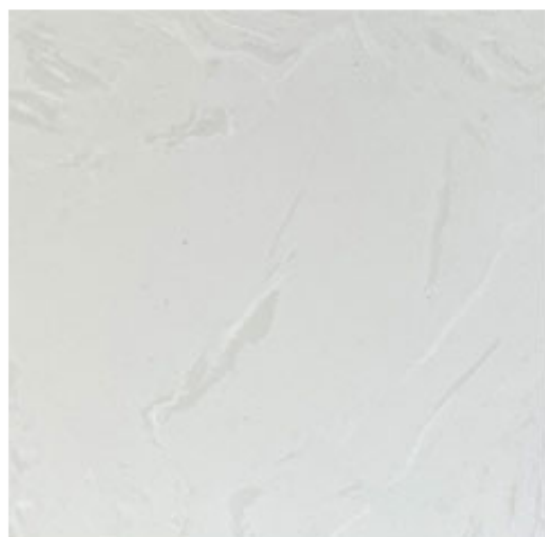


BSL-AM015S

SUPER FINE GRAIN PLATE



BSL-AM016S



BSL-AM017S



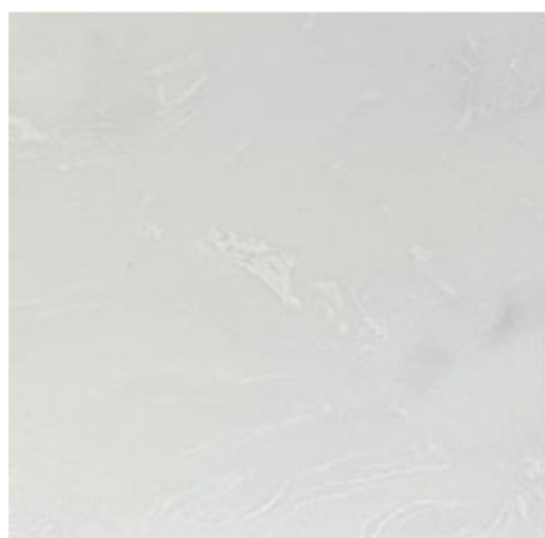
BSL-AM018S



BSL-AM019S



BSL-AM020S



BSL-AM021S

SUPER FINE GRAIN PLATE



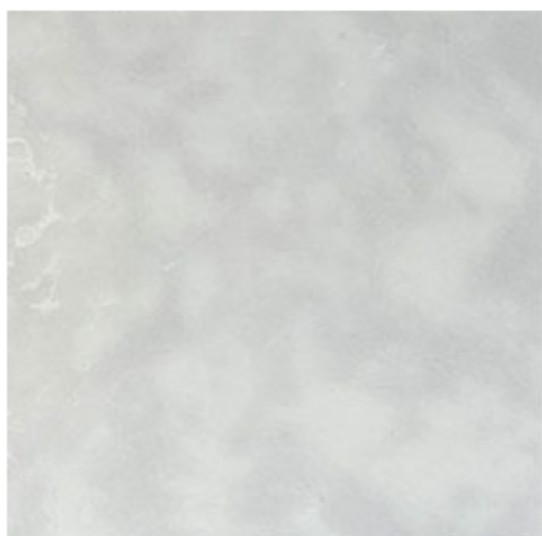
BSL-AM022S



BSL-AM023S



BSL-AM024S



BSL-AM025S



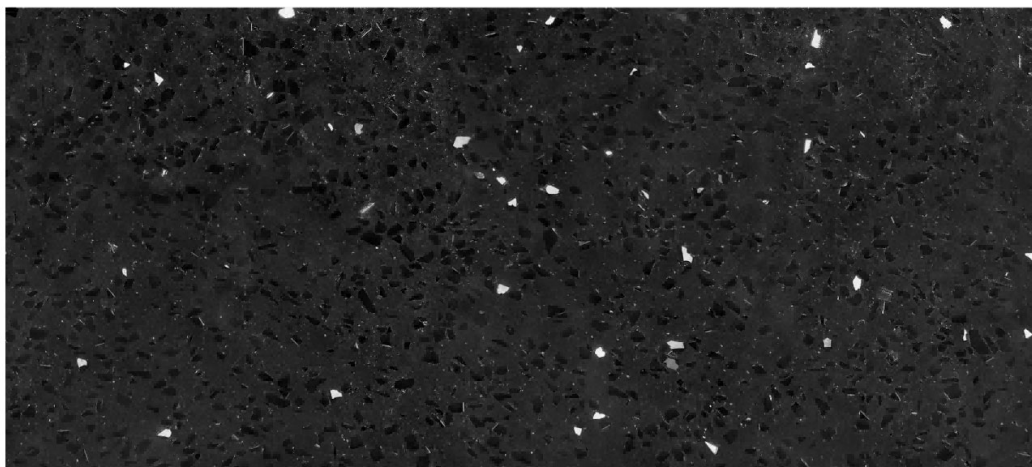
BSL-AM026S



BSL-AM027S

GRAIN PLATE

SKY BLACK



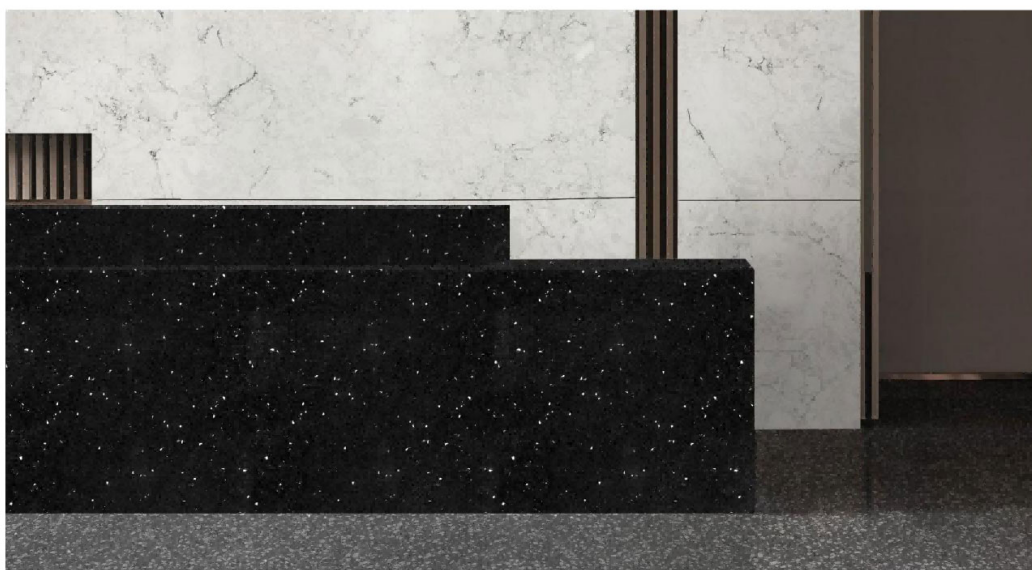
BSL-AM020

SIZE:2700X1800mm

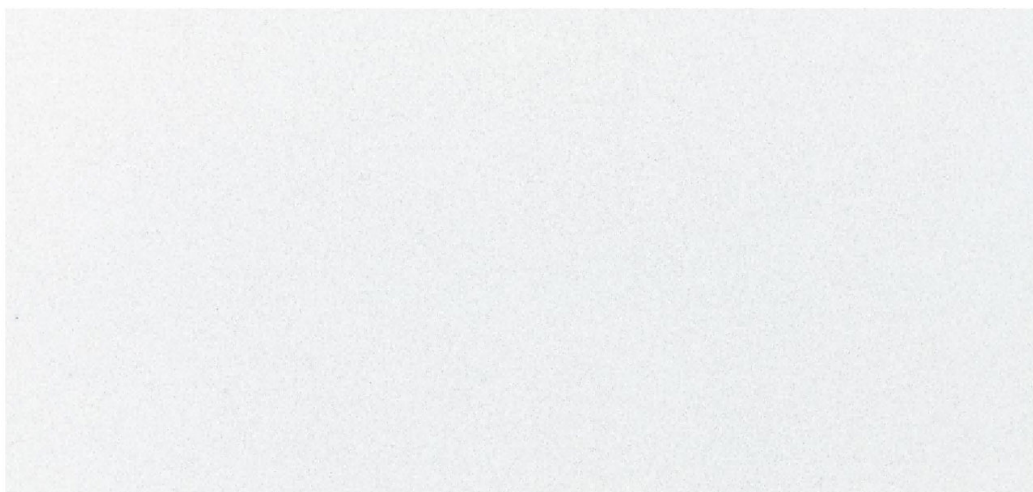
THICKNESS:14-30mm

CUT-TO-SIZE AVAILABLE

Fantastic colors, gorgeous and beautiful



PURE WHITE



BSL-AM021 SIZE:2700X1800mm THICKNESS:14-30mm CUT-TO-SIZE AVAILABLE

Fashion simple, stain resistant, impermeable, scratch-resistant.



CRYSTAL WHITE

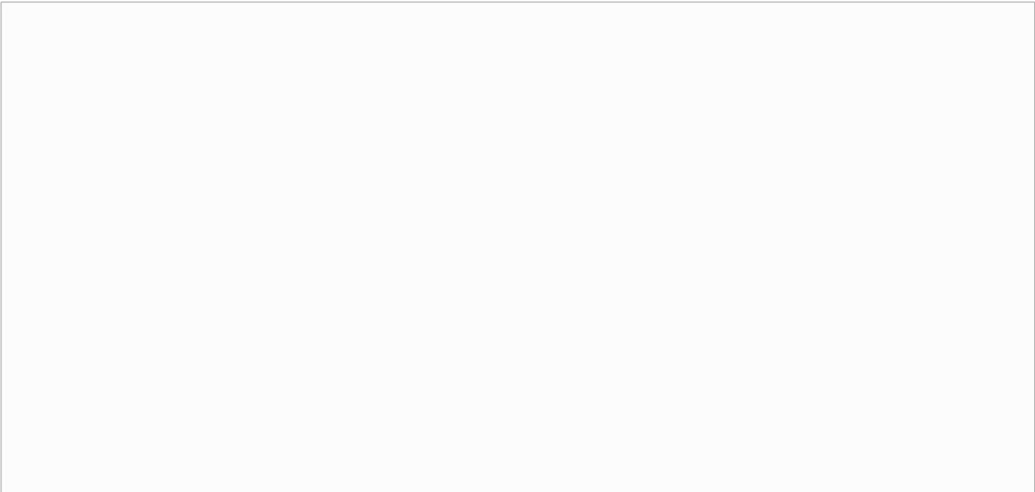


BSL-AM022 SIZE:2700X1800mm THICKNESS:14-30mm CUT-TO-SIZE AVAILABLE

Beautiful color, abrasion resistance, high temperature resistance, maintenance-free.



SUPER WHITE

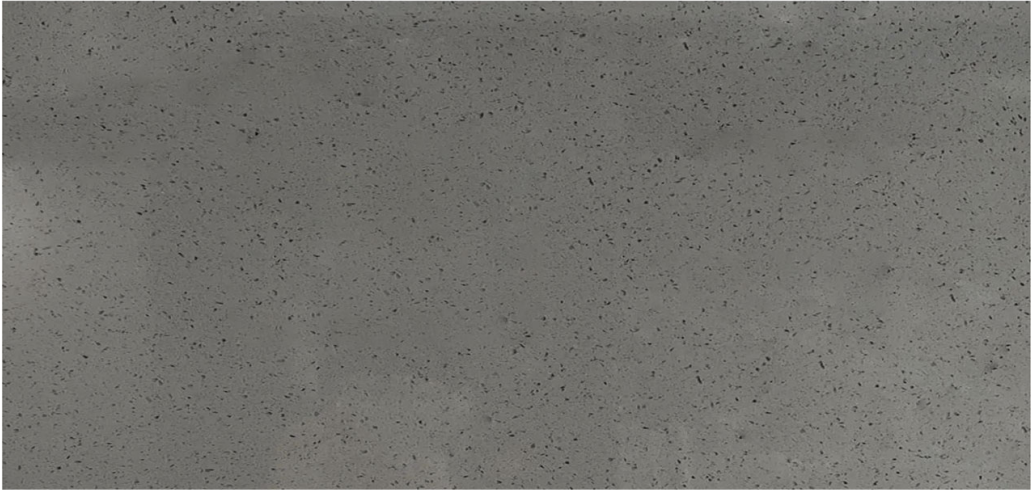


BSL-AM023 SIZE:2700X1800mm THICKNESS:14-30mm CUT-TO-SIZE AVAILABLE

Beautiful color, abrasion resistance, high temperature resistance, maintenance-free.



HIGHCLASS GREY



BSL-AM024

SIZE:2700X1800mm

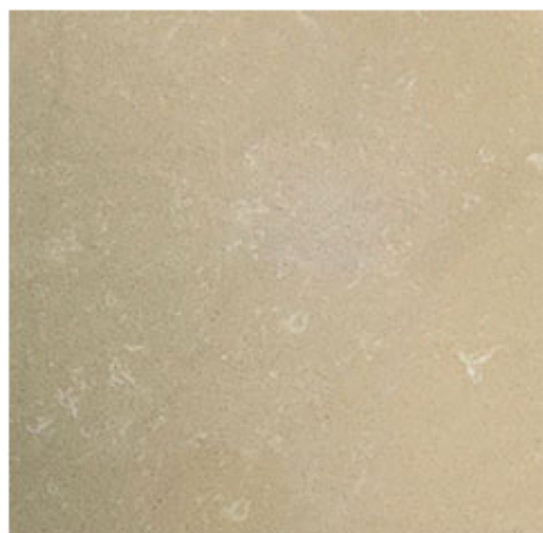
THICKNESS:14-30mm

CUT-TO-SIZE AVAILABLE

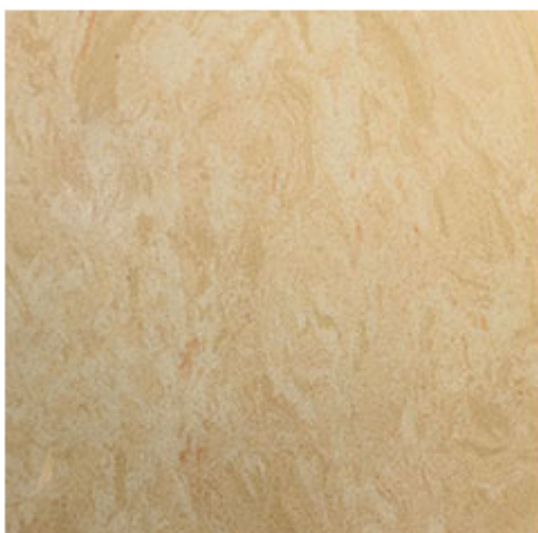
Beautiful color, abrasion resistance, high temperature resistance, maintenance-free.



Grain plate



BSL-AM054



BSL-AM055



BSL-AM056



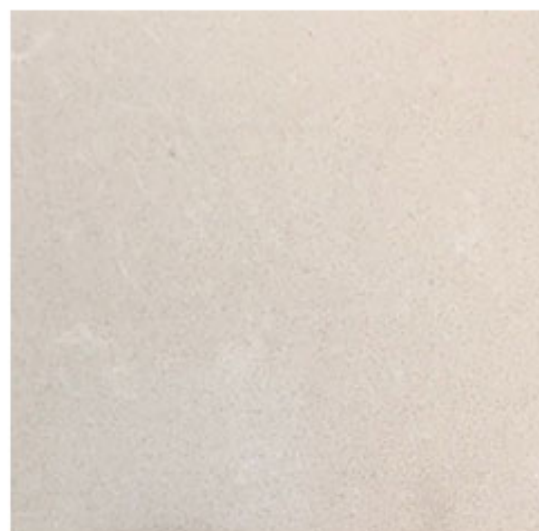
BSL-AM057



BSL-AM058



BSL-AM059



BSL-AM060



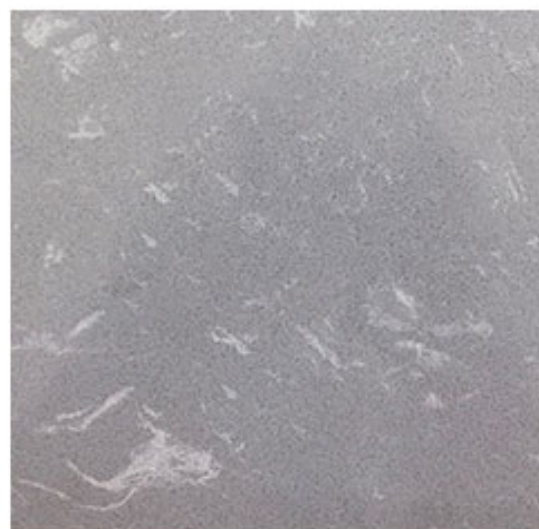
BSL-AM061



BSL-AM062



BSL-AM063



BSL-AM064



BSL-AM065